

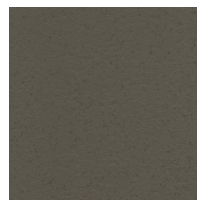


Lava Soft S520

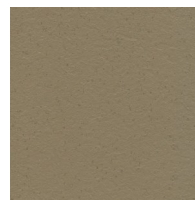
- ◇ Stone embossed surface with glossy speckles 1/8 " thick skin is laminated to sponge backing to make it 1/2 " thick
- ◇ Constructed of dense rubber compound, which makes it an extremely quiet and comfortable walking surface
- ◇ Easier to clean, and deters anti-fungal growth
- ◇ Excellent anti-fatigue properties makes it a very desirable mat for hospitals, QC areas, check out counters, lab areas, commercial kitchens, and oil change areas

Lava Retro Rubber Colors

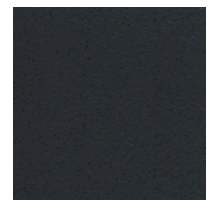
Stock	2 'x 3 '	3 'x 4 '	3 'x 5 '	3 'x 6 '
	3 'x 8 '	3 'x 10 '	4 'x 6 '	4 'x 8 '
Roll Sizes	3 ' x 60 '	4 ' x 60 '	6 'x30 '	



L02 Teidie



L03 Vesuvio



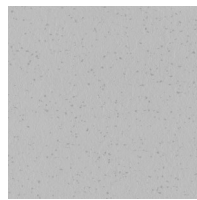
L05 Etna



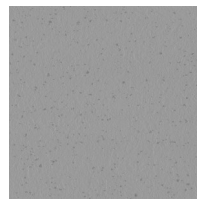
L06 Fuji



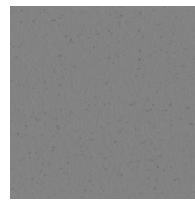
L15 Hekla



L16 Erebus



L17 Sajama



L18 Meru



L19 Kronotsky